

DELTA DISPOSAL

Serving Southwestern San Joaquin County

2026 Spring Cleanup Week

Beginning Monday, April 13 through April 17, 2026

(All items must be placed curbside on your normal garbage day.)

Waste Items To Be Collected

- All types of residential solid waste, including tree trimmings, woods, garden refuse, cardboard.
- ALL materials must be bagged, bundled and tied, or in containers.
There is a **maximum limit of 10 - 32 gallon bag/bundle/containers** per household.
- No individual item shall exceed three (3) feet in length or fifty (50) pounds and must not be no longer, wider or higher than three (3) feet. Tree limbs must be cut and bundled (tied properly).

Please note: **LOOSE PILES WILL NOT BE PICKED UP.**

PROHIBITED ITEMS

The following items **WILL NOT** be picked up:

(See proper disposal information for HHW listed at the bottom of page)

1. Liquids, hazardous or toxic waste (paints, batteries, pesticides, waste oil, etc.)
2. Unidentified or unlabeled containers.
3. Dirt, concrete or asphalt.*
4. Sofas, recliners, mattresses.*
5. Construction or commercial waste.*
6. Tires or vehicle parts.

* Please contact our office to arrange for pick up of the items above. 209-835-0601

ITEMS BANNED FROM BEING DISPOSED IN THE TRASH

These items contain hazardous constituents and are regulated.

Refrigerators, Freezers, Air-conditioners, Water Coolers, Water Heaters, Televisions, Computers, Computer Monitors, Printers, Radios, Washers, Dryers, Ovens, Stoves, Dishwashers, VCRs, DVD Players, Cell Phones, Telephones, Answering machines, Stereos, Batteries, Fluorescent Bulbs, Mercury Thermometers.

These items may be recycled for a fee at **Tracy Material Recovery**, 30703 S. MacArthur Drive, or Call (209) 468-3066 for free disposal alternatives at County facilities.

For more Spring Cleanup information or to arrange for special waste pick up, call Delta Disposal (209) 835-0601.

HOUSEHOLD HAZARDOUS WASTE PRODUCTS

Bring residential hazardous chemicals and products to the **County HHW Facility** in the Stockton Air Metro Business Park, 7850 R.A. Bridgeford Street, Stockton, CA 95206
Directions: Take Airport Way; turn East on C. E. Dixon Street; turn right onto R. A. Bridgeford.
Open from 9 am – 3 pm, Thursday through Sunday.

Call (209) 468-3066 for additional solid waste and commercial hazardous waste disposal information.

**HHW facility now
accepts syringes or
needles.**

TDSWM CUSTOMER WEB PORTAL

We're excited to offer our TDSWM Customer Web Portal, a secure and convenient way to manage your account online anytime.

- ✓ View your balance, make payments, and manage your billing preferences in one place.
- ✓ Access the Customer Portal: <https://tdswm.onlineportal.us.com/>

For Home Projects and Clean-Ups throughout the year



Bins

Available in sizes
1.5 cubic yards to
6 cubic yards:

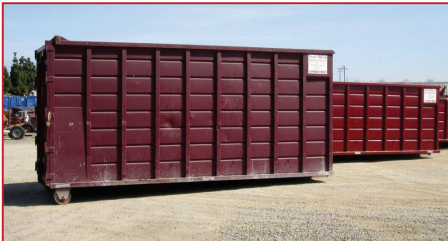
- These containers are recommended for small to moderate material disposal.



Open-Top Containers

Available in sizes
10 cubic yards to
40 cubic yards:

- These containers are recommended for large scale projects, demolition, home renovation and bulky item disposal.



Contact Delta Disposal Service at (209) 835-0601 for pricing and restrictions.

For container dimensions, please visit the Commercial Services tab at www.tdswm.com.



Will the holiday delay my collections this week?

Do I put this item in the Organics or Waste cart?

Is this item recyclable in the Recycle cart?

How do I dispose of this Hazardous Waste?

"Download the TDSWM-WVD app"



Download the app TDSWM-WVD Collection Services or access the tools online to find the answers:

- Enter your address and sign up for optional reminders and service notifications.
- Learn how to properly dispose of hundreds of items by searching the Waste Wizard.
- Report an Issue.
- Schedule a Special Collection.

DELTA DISPOSAL

Serving Southwestern San Joaquin County

Delta Disposal Service
Office: 30703 S. MacArthur Drive, Tracy, 95377
PO Box 274, Tracy, CA 95378
Customer Service: 209-835-0601 • support@tdswm.com
www.tdswm.com